

2.6 Digital Stations

The handling of traffic among sections, regions and areas can also be accomplished alternatively, on a supportive/cooperative basis, through liaison with the traditional aspects of the system, by the set of NTS Digital Relay Stations across the country. These stations, certified by their respective Area Digital Coordinators, handle traffic by digital modes at HF. The system structure is more loosely defined than is the traditional system. They serve to supplement the existing system, providing options, and flexibility in getting traffic moved expeditiously across the country, especially in overload conditions.

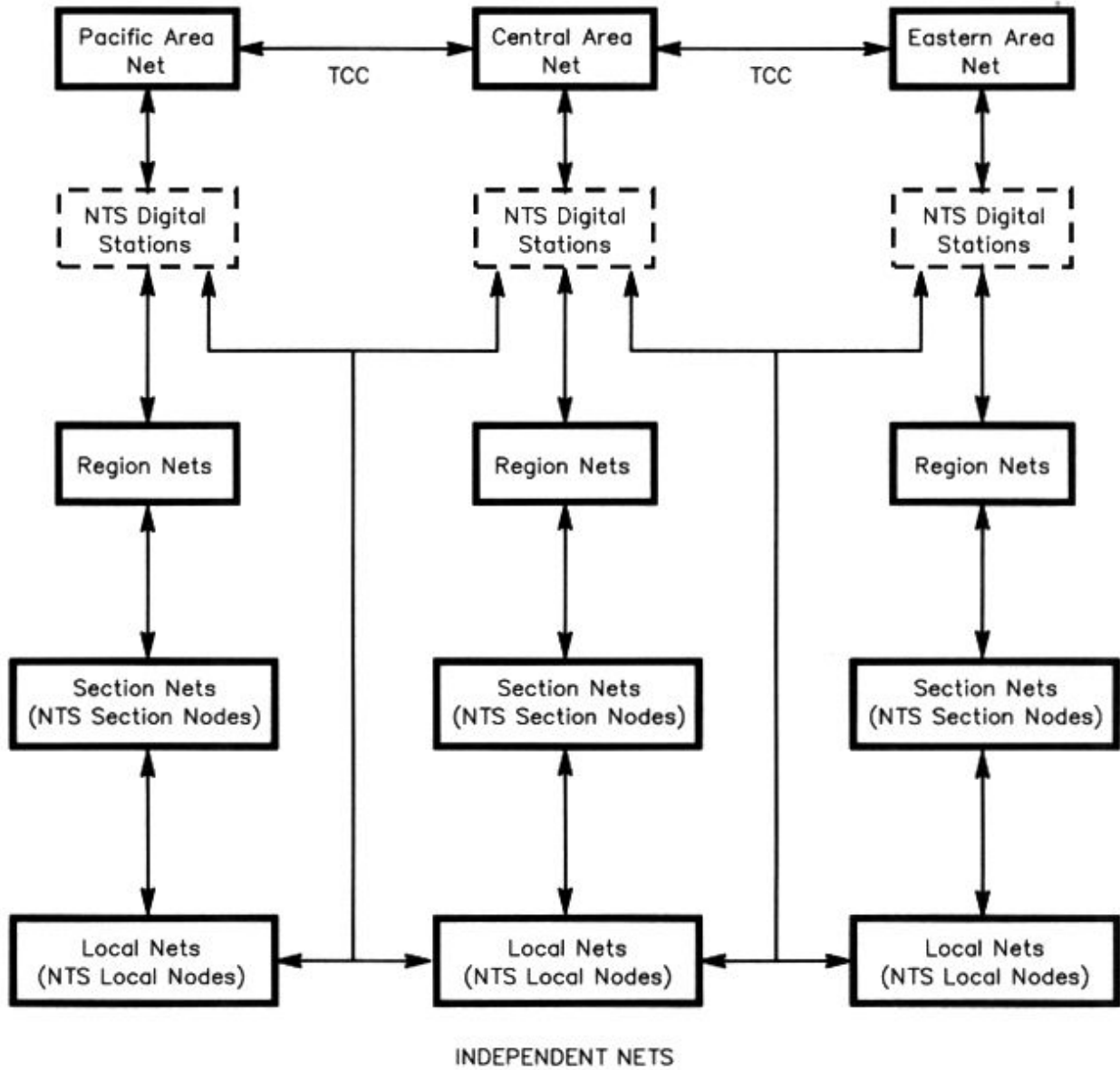


Figure 4, NTS organization chart.