

# Slidell EOC Hamfest

(Slidell City Auditorium)

- Friday November 15, 2024

- 8:00am – 2:00pm Vendor Table Setup (Enter through back ramp)
- 10:00am – 2:00pm Flea Market Table Setup (Enter through back ramp)
- 2:00pm – 5:00pm Hamfest Open to all (Lobby Entrance)

- Saturday November 16, 2024

- 7:00am – 8:00am Hamfest open to vendors and flea marketeers (back ramp)
- 8:00am – 3:00pm Hamfest Open to all (Lobby Entrance) with hourly door prizes
- 2:00pm – 2:30pm Main prizes drawings
- 2:30pm – 5:00pm Vendor and Flea Market breakdown

Hamfest webpage: <https://w5sla.net/hamfest.htm>

Table reservations email to: [hamfest@w5sla.net](mailto:hamfest@w5sla.net) – SOLD OUT!

List on email: Quantity of tables and entrance tickets needed

# Slidell EOC Hamfest

- Admission:

- Adults - \$5 (Includes 1 Raffle Ticket) Good for both days
- Children - 12 & Under Free

- Raffle Tickets:

- One (1) for \$1
- Six (6) for \$5

Hamfest webpage: <https://w5sla.net/hamfest.htm>

Table reservations email to: [hamfest@w5sla.net](mailto:hamfest@w5sla.net) – SOLD OUT!

List on email: Quantity of tables and entrance tickets needed

# Slidell EOC Hamfest

## Forums:

### (Friday - 11/15)

- 02:00 - 02:45 - [RT Systems by Karin KD4DXX Thompson \(Zoom\)](#)

### (Saturday - 11/16)

- 09:00 to 09:45 - LRS (Lightning Rig Saver) by Dave K5OZ Hartley
- 10:00 to 10:45 - ARES by Jim AI5B Coleman
- 11:00 to 11:45 - ARRL by Corey W5MMC McCrary & Elmer N5EKF Tatum
- 12:00 to 12:45 - Digital Modes by Emile KE5QKR Diodene
- 13:00 to 13:45 - CW / QRP by George KB5ILL Carr

Hamfest webpage: <https://w5sla.net/hamfest.htm>

Table reservations email to: [hamfest@w5sla.net](mailto:hamfest@w5sla.net) – SOLD OUT!

List on email: Quantity of tables and entrance tickets needed

# Slidell EOC Hamfest

## Vendors:

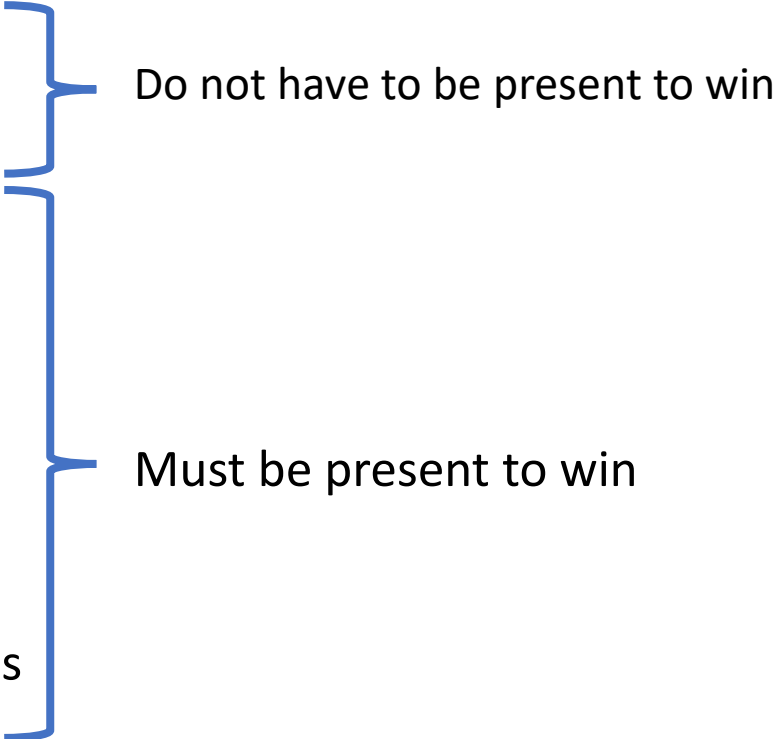
- [Chatt Radio](#)
- [The Sign Man](#)
- [N5IAW Connectors](#)
- [TN07 Engineering](#)
- [Lightning Rig Saver \(LRS\) Dude](#)

Hamfest webpage: <https://w5sla.net/hamfest.htm>

Table reservations email to: [hamfest@w5sla.net](mailto:hamfest@w5sla.net) – SOLD OUT!

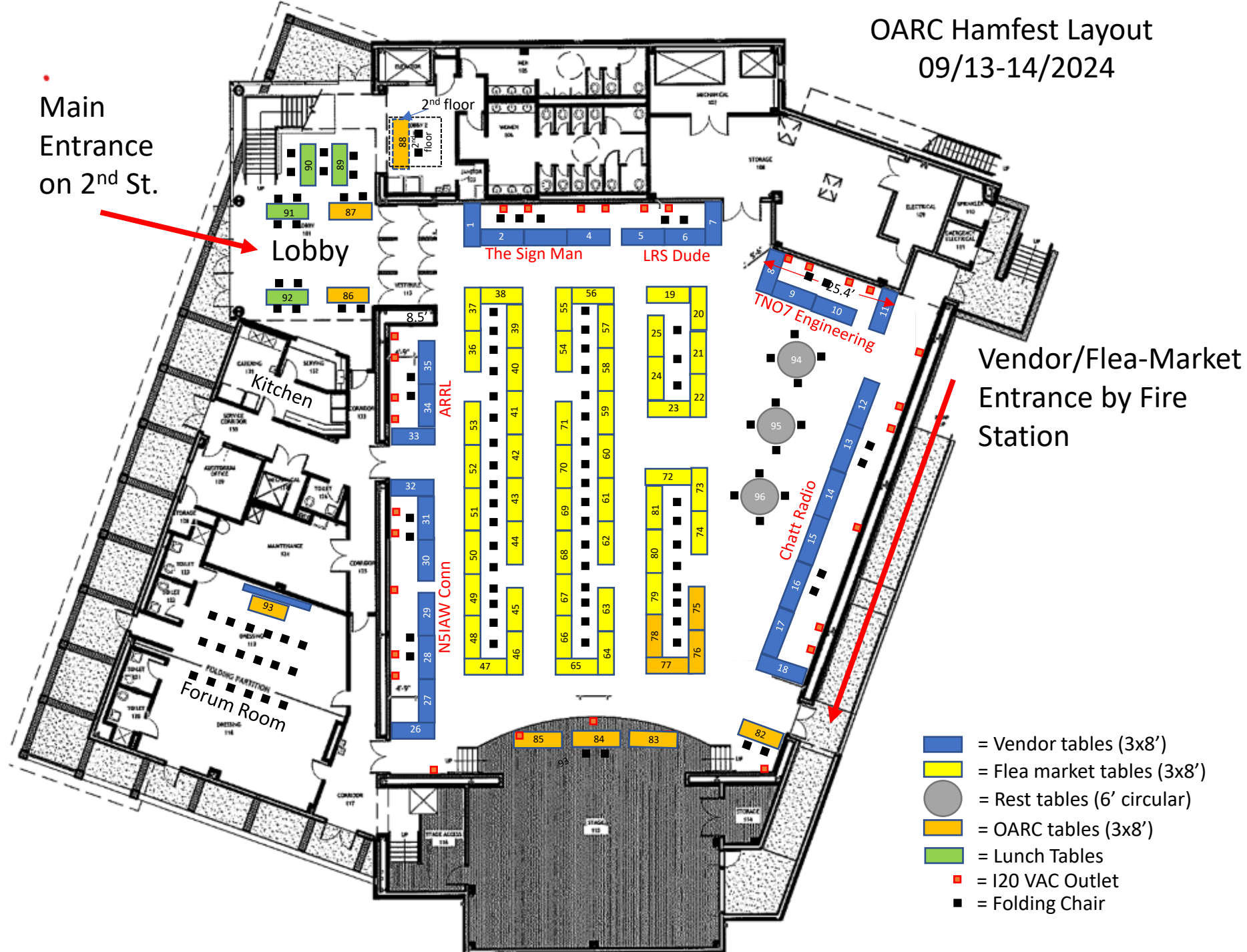
List on email: Quantity of tables and entrance tickets needed

# 2024 Slidell Hamfest Prizes:

1. Yaesu FTM-500XDR
  2. Yaesu FT-70DR
  3. Lightning Rig Saver Unit
  4. Yaesu FT-65R
  5. Yaesu FT-65R
  6. Yaesu FT-4XR
  7. Yaesu FT-4XR
  8. Yaesu FT-4XR
  9. Yaesu FT-4XR
  10. Baofeng GM-15 Pro
  11. Numerous gift certificates for door prizes
- 
- The diagram uses blue brackets to group the prizes into two categories. A top bracket groups items 1 through 3, with the text 'Do not have to be present to win' to its right. A bottom bracket groups items 4 through 11, with the text 'Must be present to win' to its right.
- Do not have to be present to win
- Must be present to win

# OARC Hamfest Layout 09/13-14/2024

Main Entrance on 2<sup>nd</sup> St.



Vendor/Flea-Market Entrance by Fire Station

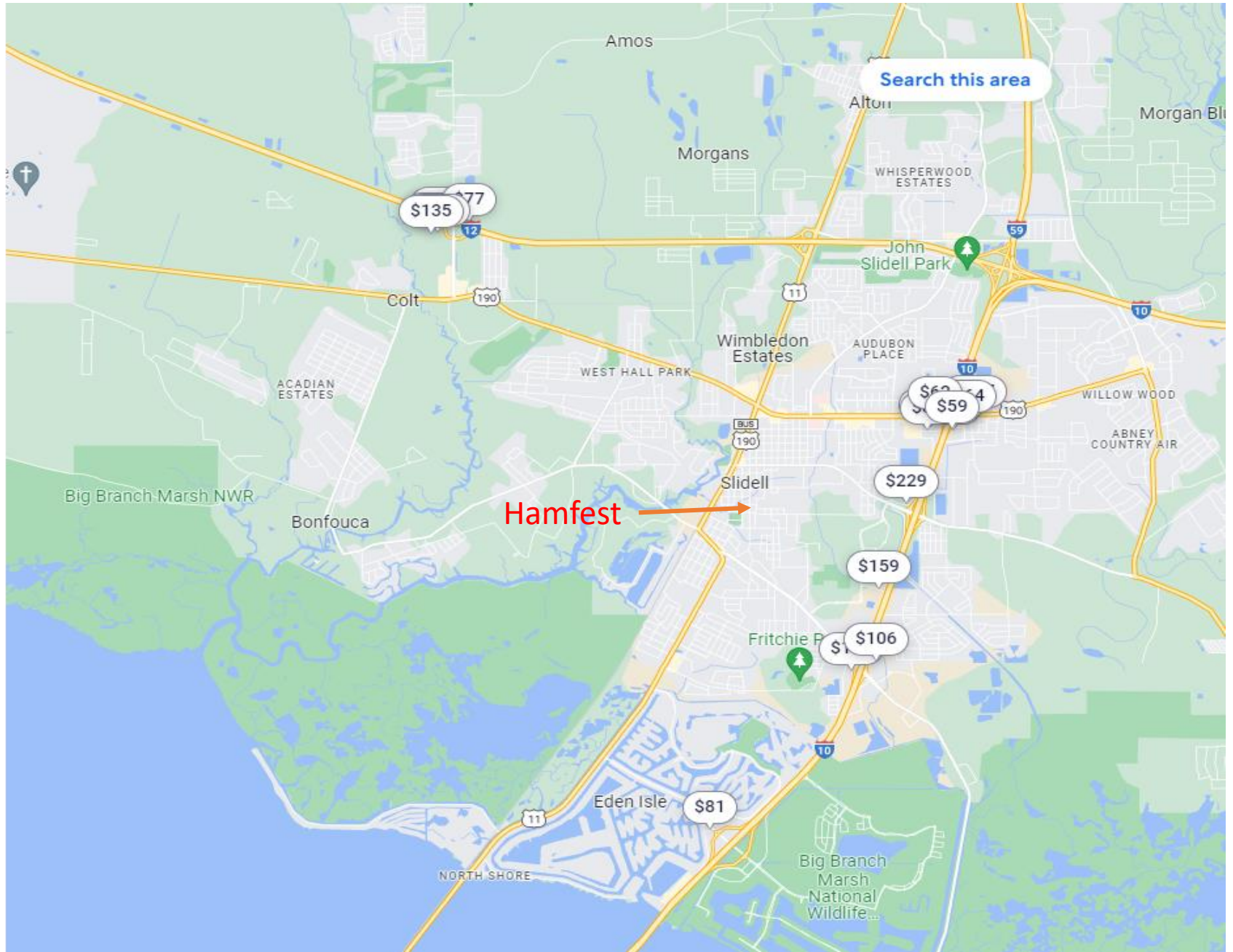
- = Vendor tables (3x8')
- = Flea market tables (3x8')
- = Rest tables (6' circular)
- = OARC tables (3x8')
- = Lunch Tables
- = I20 VAC Outlet
- = Folding Chair

# Slidell City Auditorium

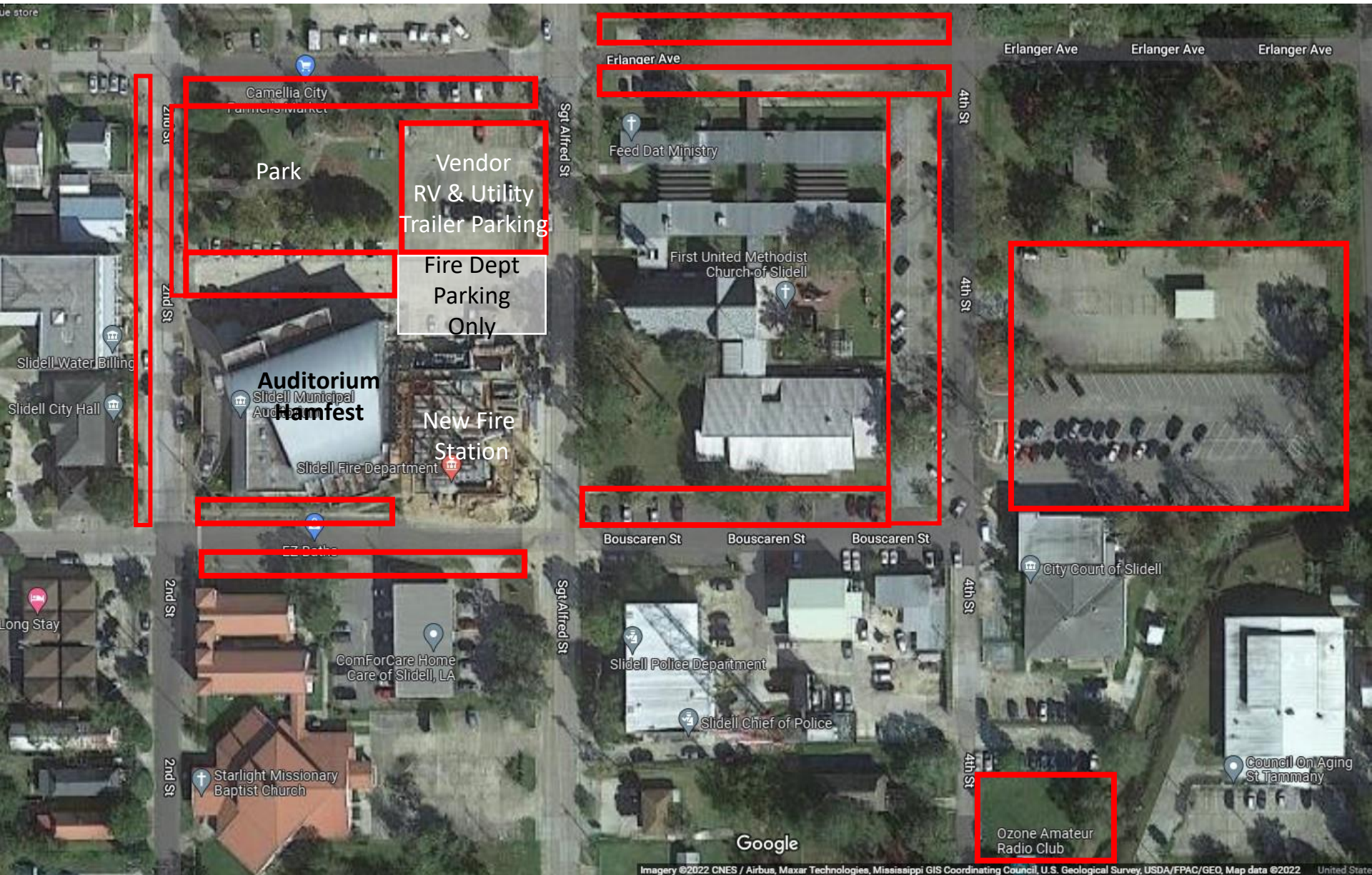
2056 Second Street, Slidell LA. 70458



Hotels in the Slidell Area: <https://www.expedia.com/Hotel->







Ham Fest Parking Outlined in Red